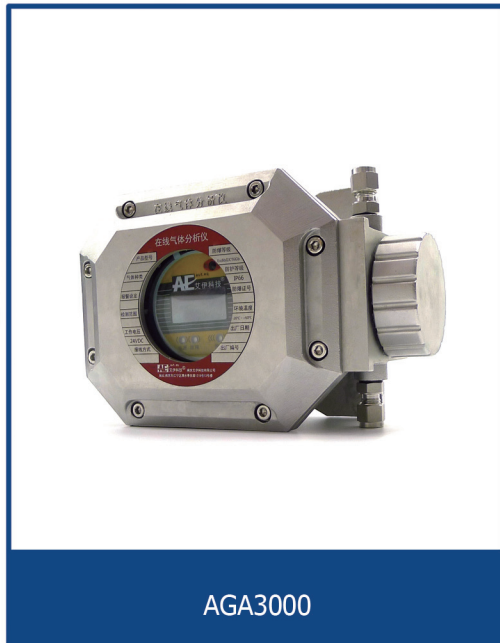




AGP200/AGP300 GAS ANALYSIS SYSTEM

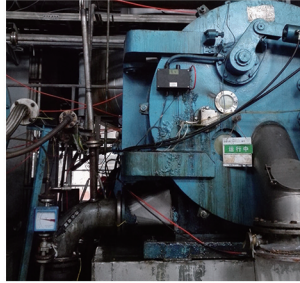


INTRODUCTION

AGP200/AGP300 gas analysis system is specially design for low cost demand of gas analysis. it realizes analysis through utilization of electric current generated by oxidation reduction reaction taken place by gas in primary cell. This series of analyzers can analyze different gases according to site demands, for example, oxygen, etc. and be used in different situations.



APPLICATION



✓ Trace oxygen analysis

✓ Oxygen monitoring of centrifuge and reaction kettle

✓ Exhaust gas and Oxygen analysis

✓ Analysis of H₂S in process pipeline

✓ Monitoring of oxygen concentration in storage tank

✓ Analysis of shielding gas in semiconductor industry

MAIN FEATURES

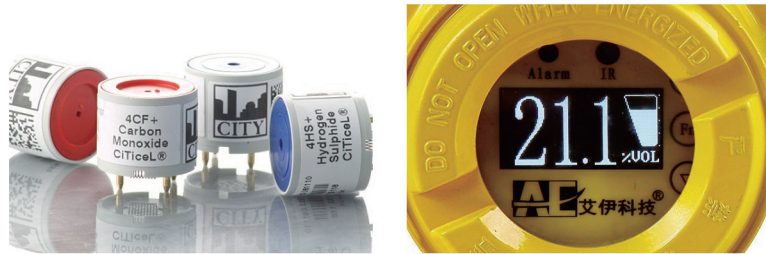
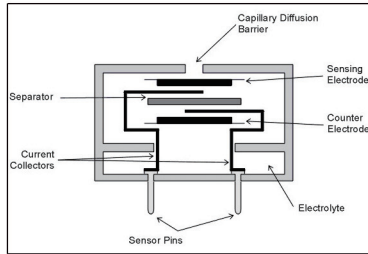
It can be used to online analysis of many gases like oxygen, H₂S, VOC, etc. It has high general purpose and is suitable for multiple uses.

Electrochemistry sensor, high detecting precision, ppm level detection can be carried out.

Sensor can be replaced, easy maintenance, low cost.

Cooperating with pretreatment system, it can be used in various kinds of working conditions with corrosiveness.

Electrochemical Sensor Technology



Electrochemistry principle is the similar to battery principle. Its working electrode and counter electrode are separated by a thin layer of electrolyte and connect with external circuit through a small resistance. After gas diffusion into sensor, oxidization reaction or reduction reaction takes place on the surface of sensitive electrode surface, the electric current is generated and flows through external circuit and two electrodes. Current intensity is related to gas concentration and can be measured through load resistance of external circuit.

PRODUCT PARAMETERS

Model	AGA3000/AG310	Detection Principle	Electrochemical
Target Gas	O ₂ (0-1000ppm/5%VOL/25%VOL) Customized		
Zero Drift	±5%F.S/1M	Span Drift	±5%F.S/1M
Response Time	≤30S (T90)	Signal Output	4-20mA/RS485
Sample Gas Flow	0.3-1.0L/min (better at 0.4L/min)	Sample Gas Pressure	2-50kpa
Working Voltage	24VDC	Operating Temp.	-10°C~55°C
Pretreatment System	Optional	Certificates	CMC / Ex d IIC T6
Dimension	225 mm *135 mm *85mm 184 mm *220 mm *99mm	Cabinet Dimension	830 mm *650mm *250mm